

Coaxial

Power Splitter/Combiner

ZAPD-2+

2 Way-0° 50Ω 1000 to 2000 MHz



N-Type version shown

CASE STYLE: F14

Connectors	Model	Price	Qty.
BNC	ZAPD-2+	\$59.95	(1-9)
SMA	ZAPD-2-S+	\$64.95	(1-9)
N-TYPE	ZAPD-2-N+	\$64.95	(1-9)

+ RoHS compliant in accordance with EU Directive (2002/95/EC)

The +Suffix has been added in order to identify RoHS Compliance. See our web site for RoHS Compliance methodologies and qualifications.

Maximum Ratings

Operating Temperature	-55°C to 100°C
Storage Temperature	-55°C to 100°C
Power Input (as a splitter)	10W max.
Internal Dissipation	0.125W max.

Permanent damage may occur if any of these limits are exceeded.

Coaxial Connections

SUM PORT	S
PORT 1	1
PORT 2	2

Features

- low insertion loss, 0.25 dB typ.
- good isolation, 25 dB typ.
- up to 10W power input as splitter
- excellent amplitude unbalance, 0.1 dB typ.
- excellent phase unbalance, 0.5 deg. typ.
- excellent VSWR, 1.1:1 typ.
- rugged shielded case

Applications

- GPS
- satellite distribution
- PCS/DCS
- communications systems

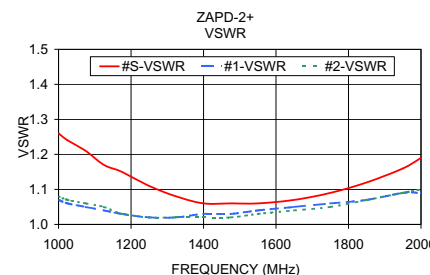
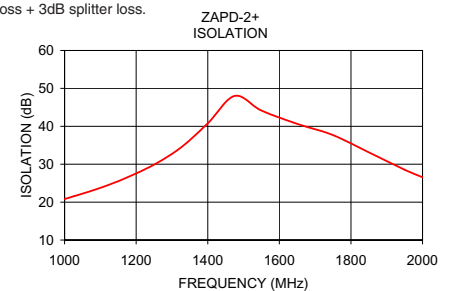
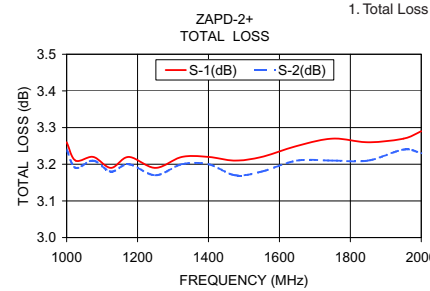
Electrical Specifications

FREQ. RANGE (MHz)	ISOLATION (dB)		INSERTION LOSS (dB) ABOVE 3.0 dB		PHASE UNBALANCE (Degrees)	AMPLITUDE UNBALANCE (dB)	VSWR (:1)	
	Typ.	Min.	Typ.	Max.			S	OUT
f_L - f_U					Max.	Max.	Typ.	Max.
1000-2000	25	19	0.25	0.6	2	0.2	—	—

Typical Performance Data

Frequency (MHz)	Total Loss ¹ (dB)		Amplitude Unbalance (dB)	Isolation (dB)	Phase Unbalance (deg.)	VSWR S	VSWR 1	VSWR 2
	S-1	S-2						
1000.00	3.26	3.24	0.02	20.82	0.14	1.26	1.07	1.08
1025.00	3.21	3.19	0.01	21.53	0.14	1.24	1.06	1.07
1075.00	3.22	3.21	0.01	22.97	0.12	1.21	1.05	1.06
1125.00	3.19	3.18	0.01	24.61	0.16	1.17	1.04	1.05
1175.00	3.22	3.20	0.02	26.54	0.13	1.15	1.03	1.03
1250.00	3.19	3.17	0.02	29.88	0.17	1.11	1.02	1.02
1325.00	3.22	3.20	0.02	34.41	0.15	1.08	1.02	1.02
1400.00	3.22	3.20	0.02	40.79	0.23	1.06	1.03	1.02
1475.00	3.21	3.17	0.04	48.01	0.27	1.06	1.03	1.02
1550.00	3.22	3.18	0.04	44.16	0.23	1.06	1.04	1.03
1650.00	3.25	3.21	0.04	40.64	0.23	1.07	1.05	1.04
1750.00	3.27	3.21	0.05	37.67	0.17	1.09	1.06	1.05
1850.00	3.26	3.21	0.05	33.14	0.22	1.12	1.07	1.07
1950.00	3.27	3.24	0.03	28.56	0.27	1.16	1.09	1.09
2000.00	3.29	3.23	0.06	26.55	0.20	1.19	1.09	1.10

1. Total Loss = Insertion Loss + 3dB splitter loss.



electrical schematic



Mini-Circuits®
 ISO 9001 ISO 14001 AS 9100 CERTIFIED
 IFIRF MICROWAVE COMPONENTS

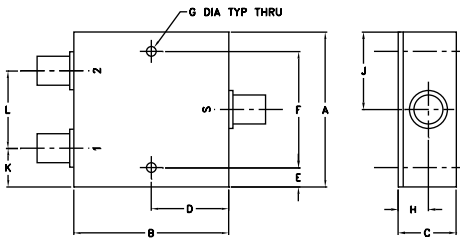
For detailed performance specs & shopping online see web site

P.O. Box 350166, Brooklyn, New York 11235-0003 (718) 934-4500 Fax (718) 332-4661 The Design Engineers Search Engine [minicircuits.com](http://www.minicircuits.com) Provides ACTUAL Data Instantly at [minicircuits.com](http://www.minicircuits.com)

Notes: 1. Performance and quality attributes and conditions not expressly stated in this specification sheet are intended to be excluded and do not form a part of this specification sheet. 2. Electrical specifications and performance data contained herein are based on Mini-Circuit's applicable established test performance criteria and measurement instructions. 3. The parts covered by this specification sheet are subject to Mini-Circuits standard limited warranty and terms and conditions (collectively, "Standard Terms"); Purchasers of this part are entitled to the rights and benefits contained therein. For a full statement of the Standard Terms and the exclusive rights and remedies thereunder, please visit Mini-Circuits' website at www.minicircuits.com/MCLStore/terms.jsp.

REV. B
 M127604
 ZAPD-2+
 HY/TD/CP/JAM
 100614

Outline Drawing



Outline Dimensions (inch/mm)

A	B	C	D	E	F	G		
2.00	2.00	0.75	1.00	0.25	1.500	0.125		
50.80	50.80	19.05	25.40	6.35	38.10	3.18		
H	J	K	L				wt	
0.39	1.00	0.50	1.00				grams	
9.91	25.40	12.70	25.40				170.0	